

GENERAL POPULATION SURVEYS

| Indicator (sphere) | Measure | Last data available | | Source |
|--|---------|-----------------------|-----------------------|--------|
| | | 2012 | 2016 | |
| Use of tobacco (cigarettes, cigars, pipes) | | | | |
| Adults (aged 15 – 64) with at least one use of tobacco in their lifetime | number | 2 920 000 - 3 047 000 | 2 936 000 - 3 081 000 | NFP |
| Proportion of adults (aged 15 – 64) with at least one use of tobacco in their lifetime | % | 59.6 - 62.2 | 63.4 - 66.6 | |
| Adults (aged 15 – 64) with at least one use of tobacco in the last year | number | 2 322 000 - 2 464 000 | 2 400 000 - 2 552 000 | |
| Proportion of adults (aged 15 – 64) with at least one use of tobacco in the last year | % | 47.4 - 50.3 | 51.9 - 55.1 | |
| Adults (aged 15 – 64) with at least one use of tobacco in the last 30 days | number | 2 249 000 - 2 376 000 | 2 294 000 - 2 446 000 | |
| Proportion adults (aged 15 – 64) with at least one use of tobacco in the last 30 days | % | 45.9 - 48.5 | 49.6 - 52.8 | |
| Use of alcohol | | | | |
| Adults (aged 15 – 64) with at least one use of alcohol in their lifetime | number | 3 963 000 - 4 061 000 | 3 760 000 - 3 871 000 | NFP |
| Proportion of adults (aged 15 – 64) with at least one use of alcohol in their lifetime | % | 80.9 - 82.9 | 81.2 - 83.6 | |
| Adults (aged 15 – 64) with at least one use of alcohol in the last year | number | 3 581 000 - 3 699 000 | 3 461 000 - 3 584 000 | |
| Proportion of adults (aged 15 – 64) with at least one use of alcohol in the last year | % | 73.1 - 75.5 | 74.8 - 77.4 | |
| Adults (aged 15 – 64) with at least one use of alcohol in the last 30 days | number | 3 106 000 - 3 233 000 | 3 066 000 - 3 201 000 | |
| Proportion of adults (aged 15 – 64) with at least one use of alcohol in the last 30 days | % | 63.4 - 66.0 | 66.2 - 69.2 | |
| Use of drugs (total) [1] | | | | |
| Adults (aged 15 – 64) with at least one use of drugs in their lifetime | number | 372 000 - 441 000 | 384 000 - 467 000 | NFP |
| Proportion of adults (aged 15 – 64) with at least one use of drugs in their lifetime | % | 7.6 - 9.0 | 8.3 - 10.1 | |
| Adults (aged 15 – 64) with at least one use of drugs in the last year | number | 171 000 - 220 000 | 183 000 - 243 000 | |
| Proportion of adults (aged 15 – 64) with at least one use of drugs in the last year | % | 3.5 - 4.5 | 3.9 - 5.3 | |
| Adults (aged 15 – 64) with at least one use of drugs in the last 30 days | number | 83 000 - 122 000 | 101 000 - 147 000 | |
| Proportion of adults (aged 15 – 64) with at least one use of drugs in the last 30 days | % | 1.7 - 2.5 | 2.2 - 3.2 | |
| Use of cannabis | | | | |
| Adults (aged 15 – 64) with at least one use of cannabis in their lifetime | number | 333 000 - 402 000 | 344 000 - 424 000 | NFP |
| Proportion of adults (aged 15 – 64) with at least one use of cannabis in their lifetime | % | 6.8 - 8.2 | 7.4 - 9.2 | |
| Young adults (aged 15 – 34) with at least one use of cannabis in their lifetime | number | 250 000 - 308 000 | 264 000 - 329 000 | |
| Proportion of young adults (aged 15 – 34) with at least one use of cannabis in their lifetime | % | 14.0 - 17.2 | 16.4 - 20.4 | |
| Adults (aged 15 – 64) with at least one use of cannabis in the last year | number | 147 000 - 196 000 | 166 000 - 223 000 | |
| Proportion adults (aged 15 – 64) with at least one use of cannabis in the last year | % | 3.0 - 4.0 | 3.6 - 4.8 | |
| Young adults (aged 15 – 34) with at least one use of cannabis in the last year | number | 127 000 - 170 000 | 142 000 - 192 000 | |
| Proportion of young adults (aged 15 – 34) with at least one use of cannabis in the last year | % | 7.1 - 9.5 | 8.8 - 12.0 | |
| Adults (aged 15 – 64) with at least one use of cannabis in the last 30 days | number | 78 000 - 118 000 | 93 000 - 138 000 | |
| Proportion of adults (aged 15 – 64) with at least one use of cannabis in the last 30 days | % | 1.6 - 2.4 | 2.0 - 3.0 | |

| Use of cocaine | | 2012 | 2016 | |
|--|--------|-------------------------|-------------------------|------------|
| Adults (aged 15 – 64) with at least one use of cocaine in their lifetime | number | 31 000 - 56 000 | 28 000 - 55 000 | NFP |
| Proportion of adults (aged 15 – 64) with at least one use of cocaine in their lifetime | % | 0.6 - 1.2 | 0.6 - 1.2 | |
| Young adults (aged 15 – 34) with at least one use of cocaine in their lifetime | number | 20 000 - 40 000 | 18 000 - 40 000 | |
| Proportion of young adults (aged 15 – 34) with at least one use of cocaine in their lifetime | % | 1.1 - 2.3 | 1.1 - 2.5 | |
| Adults (aged 15 – 64) with at least one use of cocaine in the last year | number | 4 000 - 15 000 | 6 000 - 22 000 | |
| Proportion of adults (aged 15 – 64) with at least one use of cocaine in the last year | % | 0.1 - 0.3 | 0.1 - 0.5 | |
| Young adults (aged 15 – 34) with at least one use of cocaine in the last year | number | 2 000 - 10 000 | 2 200 - 14 000 | |
| Proportion of young adults (aged 15 – 34) with at least one use of cocaine in the last year | % | 0.1 - 0.5 | 0.1 - 0.9 | |
| Use of amphetamines | | 2012 | 2016 | |
| Adults (aged 15 – 64) with at least one use of amphetamines in their lifetime | number | 45 000 - 75 000 | 52 000 - 87 000 | NFP |
| Proportion of adults (aged 15 – 64) with at least one use of amphetamines in their lifetime | % | 0.9 - 1.5 | 1.1 - 1.9 | |
| Young adults (aged 15 – 34) with at least one use of amphetamines in their lifetime | number | 36 000 - 60 000 | 42 000 - 73 000 | |
| Proportion of young adults (aged 15 – 34) with at least one use of amphetamines in their lifetime | % | 2.0 - 3.4 | 2.6 - 4.6 | |
| Adults (aged 15 – 64) with at least one use of amphetamines in the last year | number | 20 000 - 40 000 | 20 000 - 44 000 | |
| Proportion of adults (aged 15 – 64) with at least one use of amphetamines in the last year | % | 0.4 - 0.8 | 0.4 - 1.0 | |
| Young adults (aged 15 – 34) with at least one use of amphetamines in the last year | number | 15 000 - 32 000 | 18 000 - 40 000 | |
| Proportion of young adults (aged 15 – 34) with at least one use of amphetamines in the last year | % | 0.8 - 1.8 | 1.1 - 2.5 | |
| Use of ecstasy | | 2012 | 2016 | |
| Adults (aged 15 – 64) with at least one use of ecstasy in their lifetime | number | 80 000 - 116 000 | 77 000 - 118 000 | NFP |
| Proportion of adults (aged 15 – 64) with at least one use of ecstasy in their lifetime | % | 1.6 - 2.4 | 1.7 - 2.5 | |
| Young adults (aged 15 – 34) with at least one use of ecstasy in their lifetime | number | 63 000 - 95 000 | 62 000 - 98 000 | |
| Proportion of young adults (aged 15 – 34) with at least one use of ecstasy in their lifetime | % | 3.5 - 5.3 | 3.9 - 6.1 | |
| Adults (aged 15 – 64) with at least one use of ecstasy in the last year | number | 44 000 - 73 000 | 44 000 - 75 000 | |
| Proportion of adults (aged 15 – 64) with at least one use of ecstasy in the last year | % | 0.9 - 1.5 | 0.9 - 1.6 | |
| Young adults (aged 15 – 34) with at least one use of ecstasy in the last year | number | 39 000 - 65 000 | 35 000 - 64 000 | |
| Proportion of young adults (aged 15 – 34) with at least one use of ecstasy in the last year | % | 2.2 - 3.6 | 2.2 - 4.0 | |
| Use of opioids (heroin, methadone, morphine) | | 2012 | 2016 | |
| Adults (aged 15 – 64) with at least one use of opioids in their lifetime | number | 11 000 - 28 000 | 14 000 - 35 000 | NFP |
| Proportion of adults (aged 15 – 64) with at least one use of opioids in their lifetime | % | 0.2 - 0.6 | 0.3 - 0.8 | |
| Young adults (aged 15 – 34) with at least one use of opioids in their lifetime | number | 6 000 - 19 000 | 9 000 - 26 000 | |
| Proportion of young adults (aged 15 – 34) with at least one use of opioids in their lifetime | % | 0.3 - 1.1 | 0.6 - 1.6 | |
| Adults (aged 15 – 64) with at least one use of opioids in the last year | number | 4 000 - 15 000 | 6 000 - 22 000 | |
| Proportion of adults (aged 15 – 64) with at least one use of opioids in the last year | % | 0.1 - 0.3 | 0.1 - 0.5 | |
| Young adults (aged 15 – 34) with at least one use of opioids in the last year | number | 2 300 - 12 000 | 4 300 - 18 000 | |
| Proportion of young adults (aged 15 – 34) with at least one use of opioids in the last year | % | 0.1 - 0.7 | 0.3 - 1.1 | |

SURVEYS AMONG SPECIFIC GROUPS

| Indicator (sphere) | Measure | Last data available | | Source |
|---|---------|--------------------------|--------------------------|--------|
| | | 2013 | 2017 | |
| Use of tobacco (cigarettes, cigars, pipes) among school students | | | | |
| School students from 9th to 12th grade with at least one use of tobacco in their lifetime | number | 140 000 - 150 000 | 105 000 - 112 000 | NFP |
| Proportion of school students from 9th to 12th grade with at least one use of tobacco in their lifetime | % | 55.9 | 50.1 | |
| Proportion of school students from 9th to 12th grade with at least one use of tobacco in the last year | % | 47.2 | 42.1 | |
| Proportion of school students from 9th to 12th grade with at least one use of tobacco in the last 30 days | % | 41.3 | 36.1 | |
| School students from 9th to 12th grade with at least one use of tobacco in the last 24 hours | number | 82 000 - 90 000 | 55 000 - 62 000 | |
| Proportion of school students from 9th to 12th grade with at least one use of tobacco in the last 24 hours | % | 33.3 | 27.3 | |
| Use of alcohol (beer, wine, concentrate) among school students | | | | |
| School students from 9th to 12th grade with at least one use of alcohol in their lifetime | number | 210 000 - 215 000 | 163 000 - 169 000 | NFP |
| Proportion of school students from 9th to 12th grade with at least one use of alcohol in their lifetime | % | 81.6 | 76.6 | |
| Proportion of school students from 9th to 12th grade with at least one use of alcohol in the last year | % | 74.0 | 70.8 | |
| School students from 9th to 12th grade with at least one use of alcohol in the last 30 days | number | 157 000 - 166 000 | 124 000 - 131 000 | |
| Proportion of school students from 9th to 12th grade with at least one use of alcohol in the last 30 days | % | 62.1 | 58.7 | |
| Proportion of school students from 9th to 12th with a statement that they got drunk in the last year | % | 53.0 | 48.5 | |
| Use of drugs among school students[1] | | | | |
| School students from 9th to 12th grade with at least one use of drugs in their lifetime | number | 70 000 - 78 000 | 54 000 - 60 000 | NFP |
| Proportion of school students from 9th to 12th grade with at least one use of drugs in their lifetime | % | 28.2 | 26.2 | |
| Proportion of school students from 9th to 12th grade with at least one use of cannabis in their lifetime | % | 26.2 | 24.5 | |
| Proportion of school students from 9th to 12th grade with at least one use of amphetamines in their lifetime | % | 6.3 | 4.9 | |
| Proportion of school students from 9th to 12th grade with at least one use of drugs in the last 30 days | % | 15.1 | 13.3 | |
| Proportion of school students from 9th to 12th grade with at least one use of marijuana in the last 30 days | % | 10.8 | 11.1 | |
| Proportion of school students from 9th to 12th grade with at least one use of amphetamines in the last 30 days | % | 2.3 | 2.6 | |
| Proportion of school students from 9th to 12th grade with at least one use of new psychoactive substances | % | 4.9 | 3.6 | |
| Proportion of school students from 9th to 12th grade with at least one use of NPS in the last 30 days | % | 2.3 | 2.0 | |
| Use of tobacco (cigarettes, cigars, pipes) among university students | | | | |
| Proportion of students with at least one use of tobacco in their lifetime | % | 65.1 | 65.7 | NFP |
| Proportion of students with at least one use of tobacco in the last year | % | 53.7 | 55.0 | |
| Proportion of students with at least one use of tobacco in the last 30 days | % | 46.9 | 50.1 | |
| Proportion of students with at least one use of tobacco in the last 24 hours | % | 37.3 | 42.7 | |
| Use of alcohol (beer, wine, concentrate) among university students | | | | |
| Proportion of students with at least one use of alcohol in their lifetime | % | 92.7 | 89.2 | NFP |
| Proportion of students with at least one use of alcohol in the last year | % | 86.9 | 83.2 | |
| Proportion of students with at least one use of alcohol in the last 30 days | % | 77.6 | 72.7 | |
| Proportion of students with at least one use of alcohol in the last 24 hours | % | 22.9 | 24.4 | |
| Proportion of students with a statement that they got drunk in the last year | % | 52.4 | 41.7 | |

| Use of drugs among university students [1] | | 2014 | 2018 | |
|---|--------|------------------------|------------------------|------------|
| Students with at least one use of drugs in their lifetime | number | 66 000 - 71 000 | 42 000 - 46 000 | NFP |
| Proportion of students with at least one use of drugs in their lifetime | % | 36.2 | 25.2 | |
| Students with at least one use of drugs in the last year | number | 42 000 - 47 000 | 20 000 - 23 000 | |
| Proportion of students with at least one use of drugs in the last year | % | 23.6 | 12.3 | |
| Students with at least one use of drugs in the last 30 days | number | 24 000 - 27 000 | 10 000 - 12 000 | |
| Proportion of students with at least one use of drugs in the last 30 days | % | 13.5 | 6.3 | |
| Proportion of students with at least one use of cannabis in the last 30 days | % | 11.8 | 5.6 | |
| Proportion of students with at least one use of amphetamines in the last 30 days | % | 1.8 | 0.6 | |
| Proportion of students with at least one use of new psychoactive substances in their lifetime | % | 3.3 | 1.7 | |
| Use of drugs among prisoners [1] | | 2013 | 2015 | |
| Prisoners with at least one use of drugs in their lifetime | number | 3 000 - 3 300 | 1 800 - 2 000 | NFP |
| Proportion of prisoners with at least one use of drugs in their lifetime | % | 35.2 | 26.0 | |
| Proportion of prisoners with at least one use of cannabis in their lifetime | % | 33.2 | 20.5 | |
| Proportion of prisoners with at least one use of heroin in their lifetime | % | 20.6 | 9.8 | |
| Prisoners with at least one use of drugs in the last year | number | 1 800 - 2 000 | 1 100 - 1 300 | |
| Proportion of prisoners with at least one use of drugs in the last year | % | 21.6 | 15.8 | |
| Proportion of prisoners with at least one use of cannabis in the last year | % | 17.0 | 11.4 | |
| Proportion of prisoners with at least one use of heroin in the last year | % | 9.2 | 5.4 | |
| Use of drugs in recreational settings | | 2013 | 2017 | |
| Proportion of school students attended parties where were taken drugs in the last year | % | 42.0 | 29.8 | NFP |
| | | 2014 | 2018 | |
| Proportion of university students attended parties where were taken drugs in the last year | % | 41.2 | 30.1 | NFP |
| Proportion of university students attended at disco where were taken drugs in the last year | % | 35.4 | 28.4 | |
| Proportion of university students who have used cannabis in clubs or other recreational setting in the last year | % | 12.1 | 6.1 | |

HIGH-RISK DRUG USE

| | Мярка | 2016 | Источник |
|--|--------------|---------------------------------|-----------------|
| Persons from 15 to 64 years-of-age with high-risk drug use [2] | number | 31 244 (19 500 - 43 000) | NFP |
| Proportion of persons from 15 to 64 years-of-age with high-risk drug use | ‰ | 6.75 (4.21 - 9.29) | |
| Persons from 15 to 64 years-of-age with high-risk use of stimulants | number | 10 415 (3 600 - 17 200) | |
| Proportion of persons from 15 to 64 years-of-age with high-risk use of stimulants | ‰ | 2.25 (0.78 - 3.72) | |
| Persons from 15 to 64 years-of-age with high-risk use of cannabis | number | 21 986 (12 100 - 31 900) | |
| Proportion of persons from 15 to 64 years-of-age with high-risk use of cannabis | ‰ | 4.75 (2.62 - 6.88) | |

PREVENTION

| Indicator (sphere) | Measure | Last data available | | Source |
|--|---------|---------------------|---------------|-----------------|
| | | 2016 | 2017 | |
| Registered prevention activities | number | 187 | 216 | MDC |
| School students covered by programmes and campaigns for prevention of drug use and drug abuse | number | 130 000 | 55 851 | MES |
| Proportion of general prevention in registered prevention activities | % | 64 | 78 | PIC. MDC |
| Proportion of selective prevention in registered prevention activities | % | 18 | 12 | |
| Proportion of indicative prevention in registered prevention activities | % | 3 | 3 | |
| Proportion of environmental prevention in registered prevention activities | % | 15 | 7 | |
| Proportion of activities related to community involvement [3] | % | 13 | 16 | |
| Proportion of activities related to training of professionals | % | 8 | 4 | |
| Proportion of activities related to peer influence | % | 19 | 19 | |

TREATMENT SYSTEM

| Indicator (sphere) | Measure | Last data available | | Source |
|--|---------|---------------------|--------------|-------------------------|
| | | 2016 | 2017 | |
| Slots in the wards for the treatment of addictions [4] | number | 129 | 169 | NCPHA |
| Persons under dispensary observation in hospitals with a diagnosis of mental and behavioral disorders due to use of psychoactive substances | number | 1043 | 1033 | |
| Hospitalized case (discharged persons) in hospitals with a diagnosis of mental and behavioral disorders due to use of opioids | number | 506 | 369 | |
| OST programmes (until 31.12) | number | 32 | 30 | NCA and partners |
| Slots available in OST programmes (until 31.12) | number | 4 377 | 4 037 | |
| Slots occupied in OST programmes (until 31.12) | number | 3 338 | 3 247 | |
| Proportion of occupied slots with methadone in OST programmes in the total number of all occupied slots in OST programmes | % | 96.2 | 96.2 | |
| Programmes for psychosocial rehabilitation and reintegration | number | 12 | 14 | |
| Slots in programmes for psychosocial rehabilitation and reintegration | number | 279 | 283 | |
| Clients entering programmes for psychosocial rehabilitation and reintegration | number | 614 | 708 | |
| Clients who completed programmes for psychosocial rehabilitation and reintegration | number | 320 | 365 | |

DRUG-RELATED TREATMENT DEMAND

| Indicator (sphere) | Measure | Last data available | | Source |
|---|---------|---------------------|------|--------|
| | | 2016 | 2017 | |
| Proportion of persons seeking treatment in relation to the use of heroin or other opioids | % | 62.2 | 67.7 | NFP |
| Proportion of female in the persons seeking treatment | % | 16.6 | 20.2 | |
| Average age of persons seeking treatment | years | 30.6 | 30.8 | |
| Average age at first use of the primary drug among the persons seeking treatment | years | 19.9 | 19.6 | |
| Proportion of persons seeking treatment with first use of the primary drug up to 19 years of age | % | 47.5 | 49.8 | |
| Proportion of school students and university students among the persons seeking treatment | % | 4.9 | 4.6 | |
| Proportion of persons without education among the persons seeking treatment | % | 4.8 | 4.9 | |
| Proportion of persons of permanent employment among the persons seeking treatment | % | 17.8 | 23.6 | |
| Proportion of the unemployed persons among the persons seeking treatment | % | 43.8 | 40.5 | |
| Proportion of persons with health insurance among the persons seeking treatment | % | 45.5 | 50.0 | |
| Proportion of the homeless persons among the persons seeking treatment | % | 1.0 | 2.1 | |
| Proportion of persons who use daily the primary drug among the persons seeking treatment | % | 43.3 | 39.2 | |
| Proportion of persons injecting the primary drug among the persons seeking treatment | % | 59.1 | 50.6 | |
| Average age at first injecting drug use among the persons seeking treatment | years | 20.4 | 20.9 | |
| Proportion of persons with duration of use > 5 years among the persons seeking treatment | % | 75.9 | 75.1 | |
| Proportion of persons who have used in their lifetime used needles or syringes among the persons seeking treatment | % | 24.4 | 30.3 | |
| Proportion of persons who used in the past 30 days used needles or syringes among the persons seeking treatment | % | 11.7 | 17.9 | |
| Proportion of persons living with other drug users among the persons seeking treatment | % | 9.7 | 12.8 | |
| Proportion of persons never previously treated | % | 27.7 | 30.5 | |

DRUG-RELATED HARM REDUCTION

| Indicator (sphere) | Measure | Last data available | | Source |
|---|---------|---------------------|--------|----------------------|
| | | 2016 | 2017 | |
| Pre-treatment programmes in the sphere of drug addiction | number | 5 | 4 | NCA. MH and partners |
| Contacts in the pre-treatment programmes in the sphere of drug addiction | number | 33 711 | 11 075 | |
| Needles and syringes distributed in the pre-treatment programmes in the sphere of drug addiction | number | 214 865 | 52 927 | |
| Individual clients covered by pre-treatment programmes | number | 4 785 | 2 821 | |
| Condoms distributed to clients of the programmes | number | 82 713 | 38 873 | |

DRUG-RELATED INFECTIOUS DISEASES

| Indicator (sphere) | Measure | Last data available | | Source |
|---|---------|---------------------|------|--------|
| | | 2016 | 2017 | |
| Number of injecting drug users in the newly registered HIV positive persons in Bulgaria | number | 22 | 31 | ECDC |
| Proportion of injecting drug users in the total number of newly registered HIV positive persons in Bulgaria | % | 10.9 | 12.9 | |
| Number of positive tests for HIV in injecting drug users in Sofia | number | 10 | 19 | NCA |
| Proportion of positive tests for HIV in injecting drug users tests in Sofia | % | 3.0 | 6.0 | |
| Number of positive tests for Hepatitis C in injecting drug users in Sofia | number | 192 | 245 | |
| Proportion of positive tests for Hepatitis C in injecting drug users tests in Sofia | % | 57.8 | 76.8 | |
| Number of positive tests for Hepatitis B in injecting drug users in Sofia | number | 6 | 5 | |
| Proportion of positive tests for Hepatitis B in injecting drug users tests in Sofia | % | 1.8 | 5.1 | |
| Number of positive tests for syphilis in injecting drug users in Sofia | number | 17 | 17 | |
| Proportion of positive tests for syphilis in injecting drug users tests in Sofia | % | 5.1 | 5.3 | |

DRUG-RELATED DEATHS

| Indicator (sphere) | Measure | Last data available | | Source |
|---|-------------|---------------------|------|--------|
| | | 2016 | 2017 | |
| Drug and hallucinogens poisoning-induced deaths | number | 22 | 18 | NSI |
| Average age of drug poisoning-induced deaths in Bulgaria | years | 38.3 | 34.9 | |
| Proportion of male drug poisoning-induced deaths in Bulgaria | % | 81.8 | 83.3 | |
| Proportion of drug poisoning-induced deaths aged 25-39 in Bulgaria | % | 81.8 | 77.2 | |
| Mortality rate (males) due to drug poisoning in Bulgaria | 1 / 100 000 | 0.52 | 0.44 | |
| Mortality rate (females) due to drug poisoning in Bulgaria | 1 / 100 000 | 0.11 | 0.08 | |
| Proportion of accidental poisoning by and exposure to narcotics and psychodysleptics [hallucinogens], not elsewhere classified (X42) | % | 59.1 | 88.9 | |
| Proportion of intentional self-poisoning by and exposure to antiepileptic, sedative-hypnotic, antiparkinsonism and psychotropic drugs, not elsewhere classified (X61) | % | 4.5 | 5.6 | |
| Proportion of intentional self-poisoning by and exposure to narcotics and psychodysleptics [hallucinogens], not elsewhere classified (X62) | % | 4.5 | - | |
| Proportion of poisoning by and exposure to narcotics and psychodysleptics [hallucinogens], not elsewhere classified, undetermined intent (Y12) | % | 9.1 | 5.6 | |
| Proportion of deaths consequence of mental and behavioural disorders due to the use of psychoactive substances (F codes) | % | 22.7 | - | |

DRUG SUPPLY REDUCTION

| Indicator (sphere) | Measure | Last data available | | Source |
|--|---------|---------------------|--------|------------------------|
| | | 2016 | 2017 | |
| Detained persons by the authorities of the Ministry of Interior under "Drugs" | number | 5 201 | 7 233 | MI |
| Realized specialized police operations by the authorities of the Ministry of Interior under "Drugs" | number | 2 978 | 4 247 | |
| Identified new drug gatherings and places for selling drugs | number | 175 | 224 | |
| Pre-trial proceedings for drug-related crimes | number | 6 950 | 7 259 | SCP |
| Closed pre-trial proceedings for drug-related crimes | number | 6 713 | 7 447 | NSI |
| Registered drug-related crimes (under Article 242 (2) and (3) and Articles 354a-354c of the Criminal Code) | number | 2 118 | 2 433 | |
| Convicted persons for drug-related crimes [5] | number | 1 955 | 2 028 | |
| Underage and juveniles persons. perpetrators of drug-related crimes | number | 407 | 421 | MI, Customs, NFP |
| Cases of drug seizures | number | 321 | 425 | |
| Total amount of drug seizures | kg | 20 193 | 37 119 | |
| | tablets | 704 | 13 365 | |

STREET-LEVEL PRICES OF DRUGS

| Indicator (sphere) | Measure | Last data available | | Source |
|--|---------|---------------------|------|----------------------------------|
| | | 2017 | 2018 | |
| The most common street-level price for 1 g of cannabis (grass) | euro | 5 | 5 | MI, PIC, MDC, NGOs, NFP |
| The most common street-level price for 1 g of heroin | euro | 25 | 25 | |
| The most common street-level price for 1 g of cocaine | euro | 61 | 61 | |
| The most common street-level price for 1 g of amphetamine | euro | 5 | 7,5 | |
| The most common street-level price for 1 tablet of ecstasy | euro | 5 | 7,5 | |

DRUG PURITY

| Indicator (sphere) | Measure | Last data available | | Source |
|--|---------|---------------------|------|----------|
| | | 2016 | 2017 | |
| The most common level of content of active substance in cannabis (grass) | % | 12.0 | 12.6 | NIC (MI) |
| The most common level of content of active substance in heroin | % | 13.9 | 18.6 | |
| The most common level of content of active substance in cocaine | % | 47.5 | 53.7 | |
| The most common level of content of active substance in amphetamine | % | 14.5 | 16.0 | |
| The most common level of content of active substance in ecstasy | % | 46.2 | 39.3 | |

EARLY WARNING SYSTEM

| Indicator (sphere) | Measure | Last data available | | Source |
|--|---------|---------------------|----------|-------------------------------------|
| | | 2017 | 2018 | |
| Uncontrolled psychoactive substances registered in the Early Warning System in Bulgaria | number | 13 | 12 | NIC (MI) Customs, NFP, EWS |
| Uncontrolled psychoactive substances registered for the first time in the Early Warning System in Bulgaria | number | 2 | 3 | |
| Quantity of uncontrolled psychoactive substances registered in the Early Warning System in Bulgaria | kg | 2 066.81 | 6 711.66 | |
| New psychoactive substances placed on the list of the prohibited substances | number | 10 | 14 | NDC |

[1] Drug use - includes the use of opioids (heroin, methadone, morphine, codeine, etc.), stimulants (cocaine, amphetamines, methamphetamines, ecstasy), hallucinogens (LSD, hallucinogenic mushrooms), synthetic cannabinoids, inhalants.

[2] High-risk drug use is associated with a high-intensity and risk model of opioid, stimulant and cannabis use over the last 12 months.

[3] Community involvement – activities targeted at the community in order to raise public awareness on drug-related issues. The aim is to introduce the topic and possibly include the community in future prevention activities.

[4] Included state psychiatric hospitals, mental health centres and psychiatric clinics.

[5] Crimes registered in previous years are also included.

List of Abbreviations

CFMD – Centres for Forensic Medicine and Deontology

Customs – Customs Agency. Ministry of Finance

ECDC – European Centre for Disease Prevention and Control

EWS – Early Warning System

MDC – Municipal Drug Councils

MES – Ministry of Education and Science

MH – Ministry of Health

MI – Ministry of Interior

NCA – National Centre for Addictions

NCPHA – National Centre of Public Health and Analyses

NDC – National Drug Council

NFP – National Focal Point on Drugs and Drug Addictions

NGOs – Non-governmental organizations

NIC – National Institute of Criminology (MI)

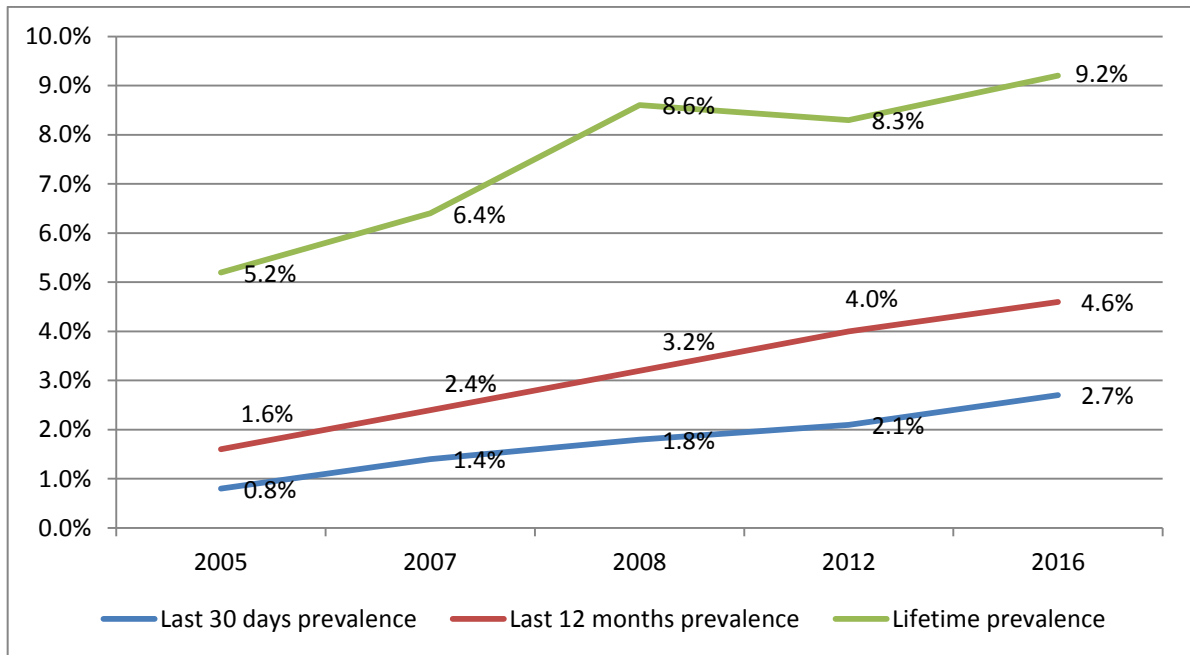
NSI – National Statistical Institute

OST – Opioid substitution treatment

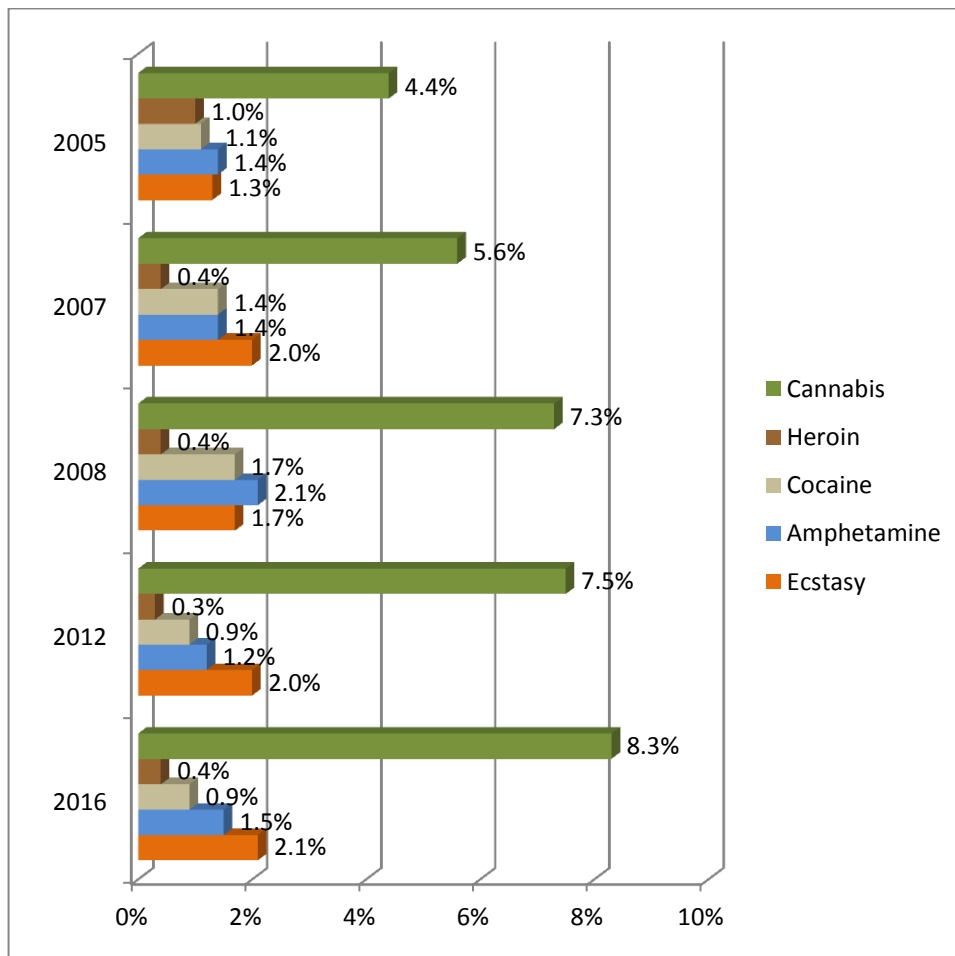
PIC – Prevention and Information Centres

SCP – Supreme Cassation Prosecution

DRUG USE IN THE GENERAL POPULATION (ADULTS AGED 15-64)

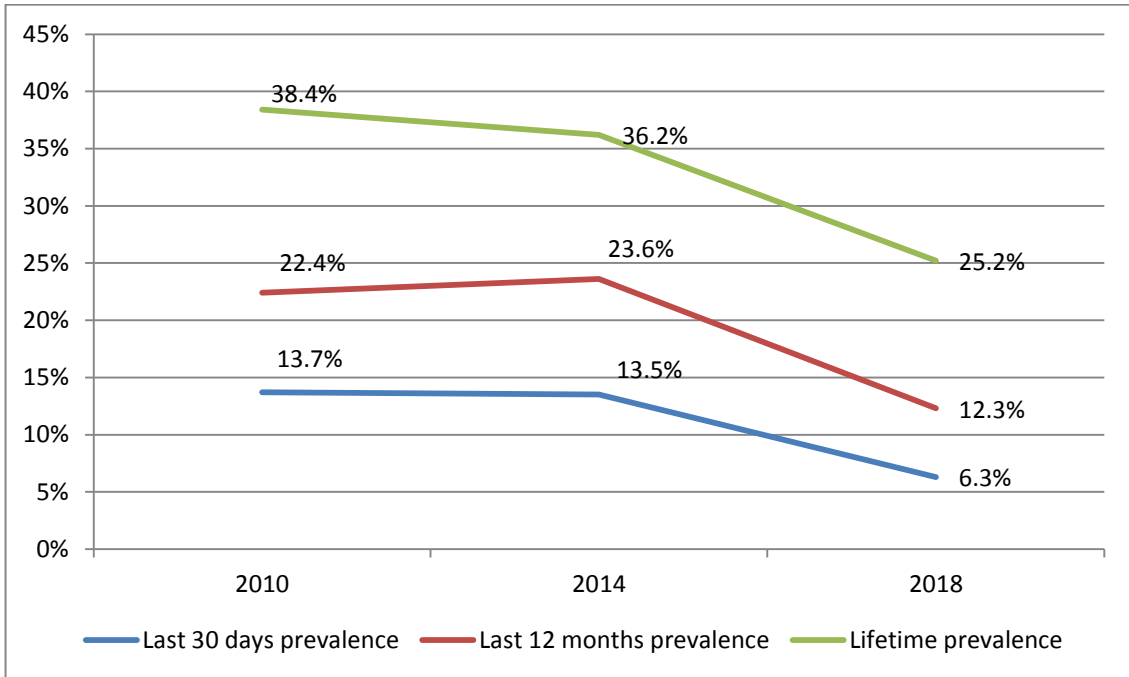


DRUG USE IN THE GENERAL POPULATION (BY SUBSTANCES)

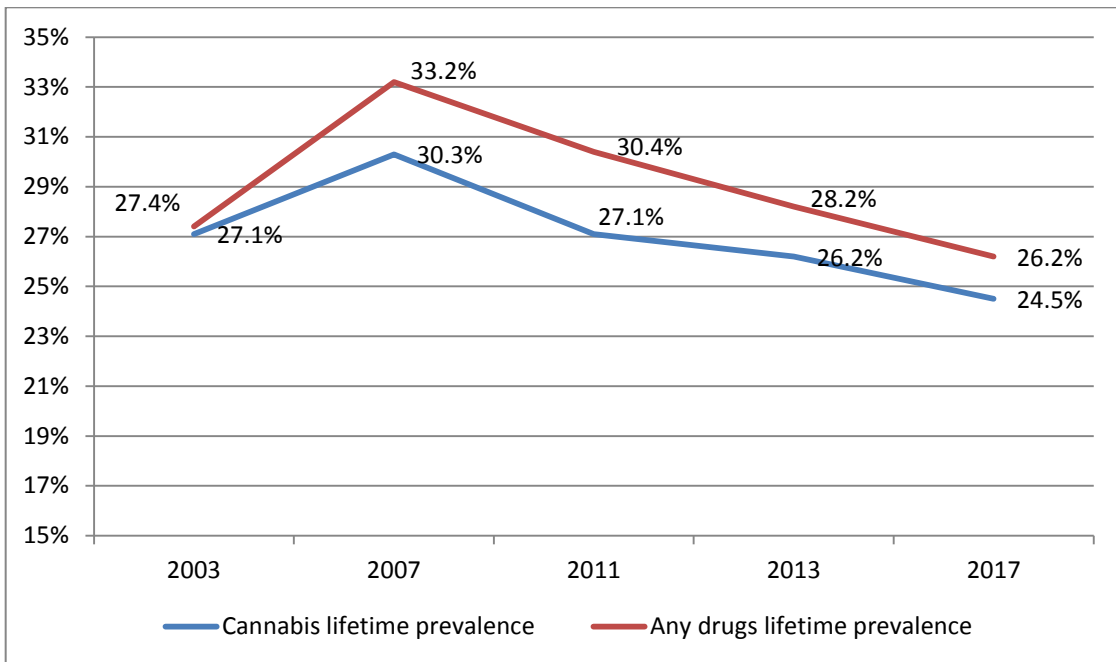


Source: National Focal Point on Drugs and Drug Addictions

**DRUG USE AMONG THE UNIVERSITY STUDENTS
(2010 – 2018)**

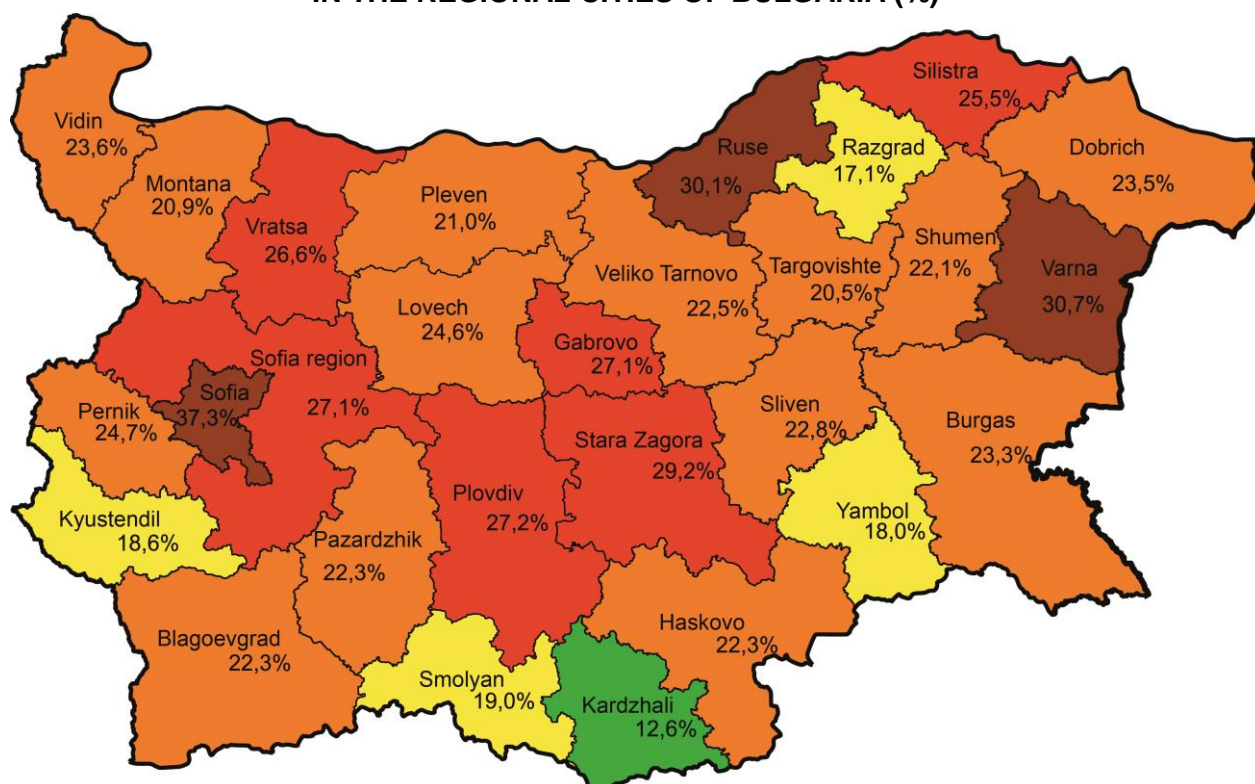


**DRUG USE AMONG THE SCHOOL STUDENTS (9-12 GRADE)
(2003 – 2017)**

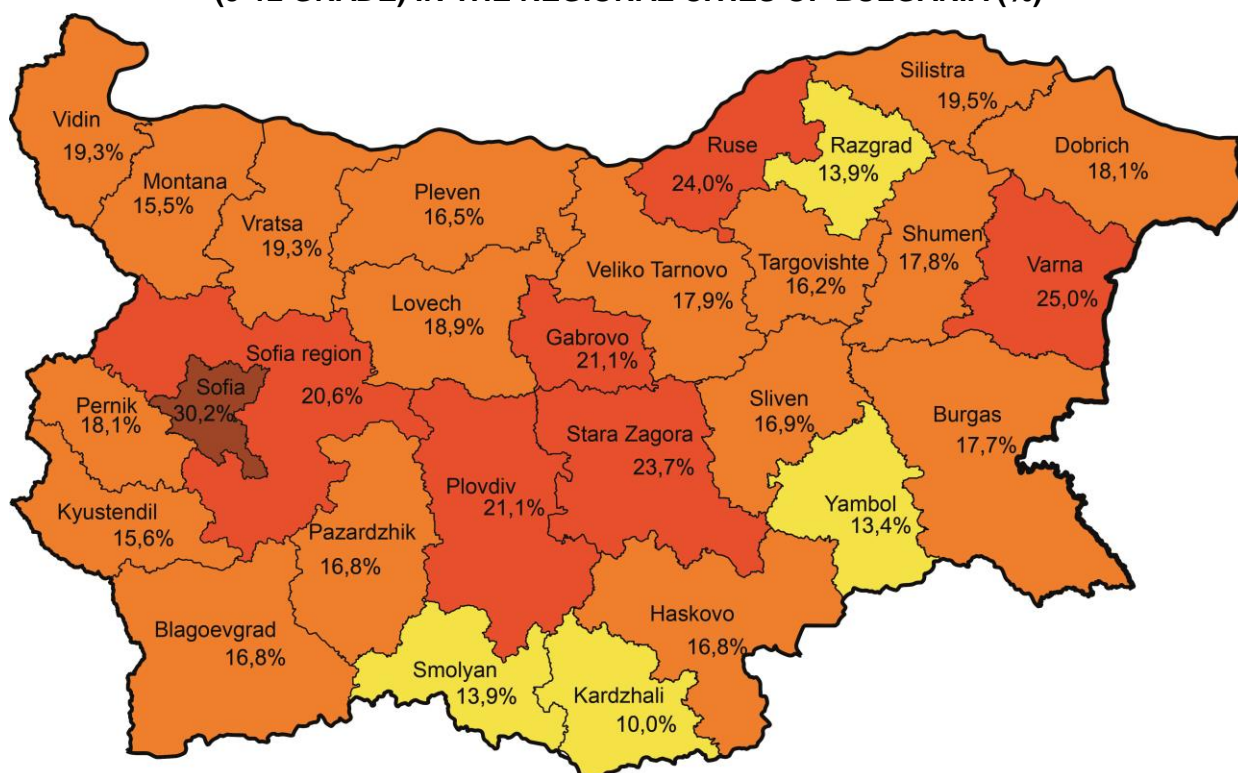


Source: National Focal Point on Drugs and Drug Addictions

LIFETIME PREVALENCE OF DRUG USE AMONG THE SCHOOL STUDENTS (9-12 GRADE) IN THE REGIONAL CITIES OF BULGARIA (%)

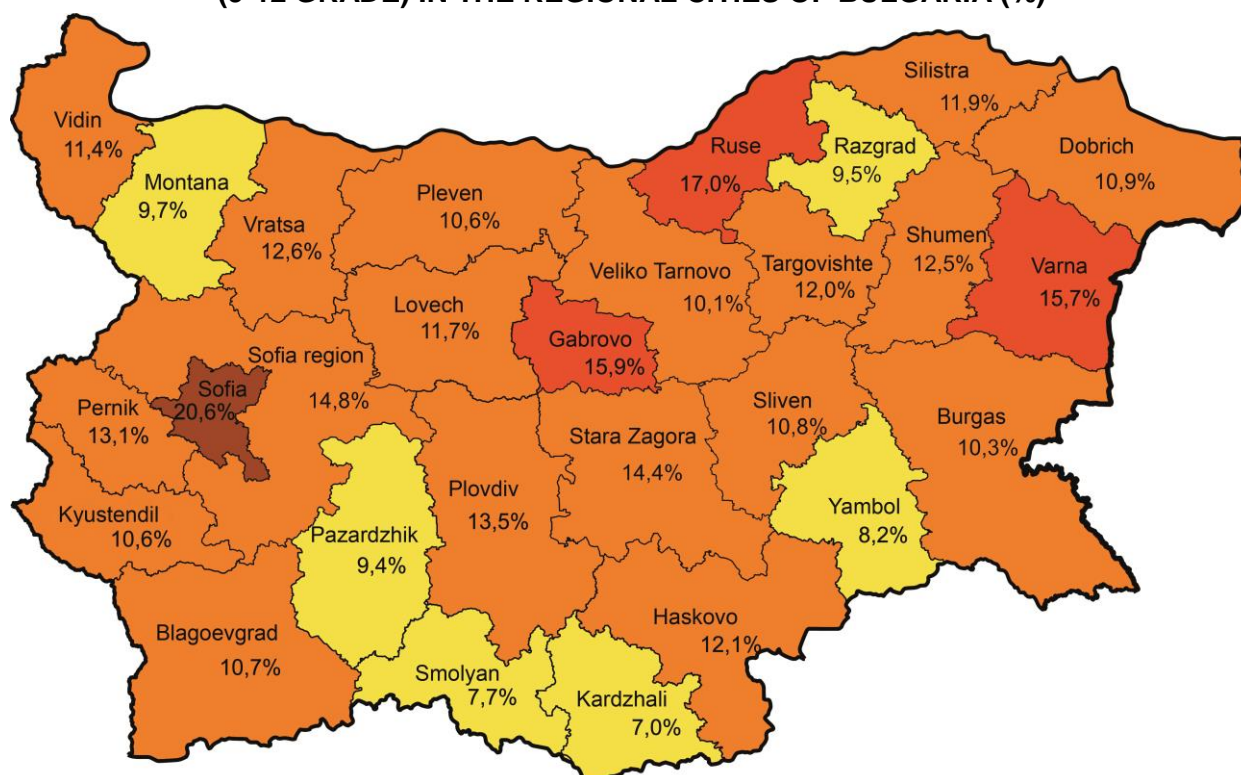


LAST 12 MONTHS PREVALENCE OF DRUG USE AMONG THE SCHOOL STUDENTS (9-12 GRADE) IN THE REGIONAL CITIES OF BULGARIA (%)

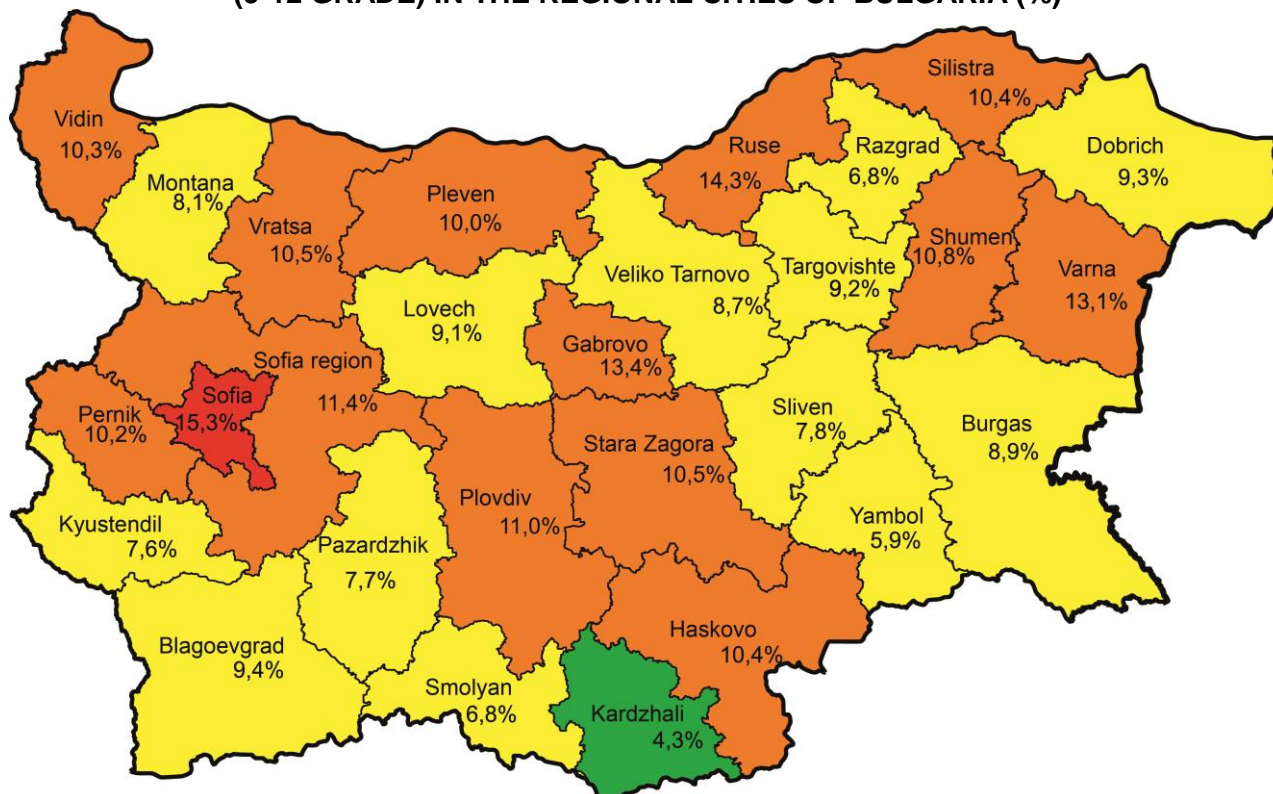


Source: National Focal Point on Drugs and Drug Addictions, 2016 – 2018

LAST 30 DAYS PREVALENCE OF DRUG USE AMONG THE SCHOOL STUDENTS (9-12 GRADE) IN THE REGIONAL CITIES OF BULGARIA (%)

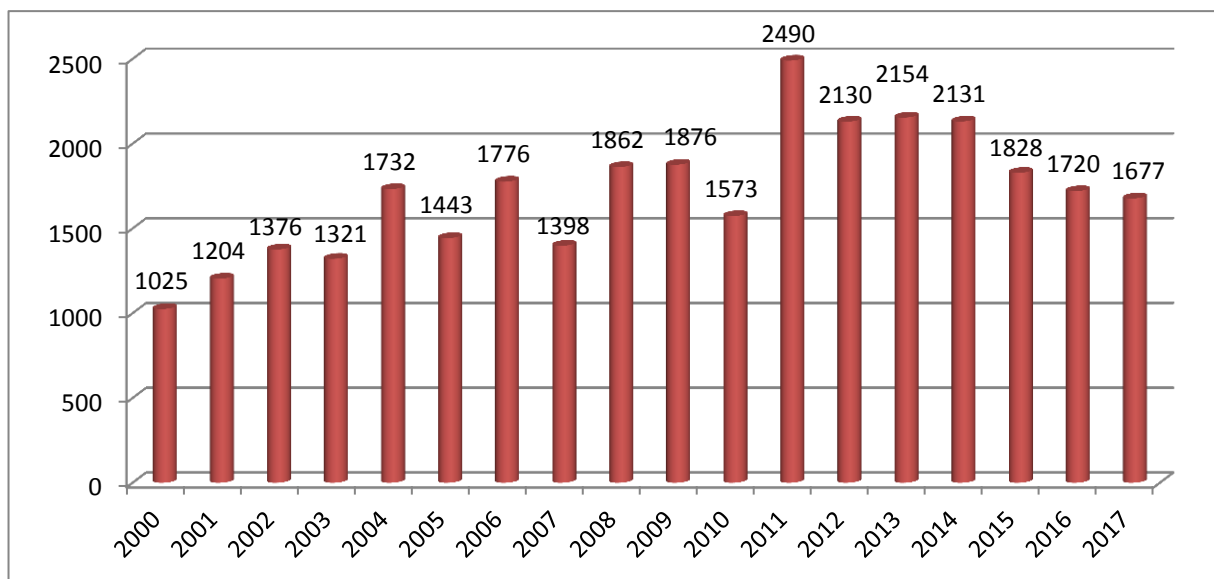


LAST 30 DAYS PREVALENCE OF MARIJUANA USE AMONG THE SCHOOL STUDENTS (9-12 GRADE) IN THE REGIONAL CITIES OF BULGARIA (%)



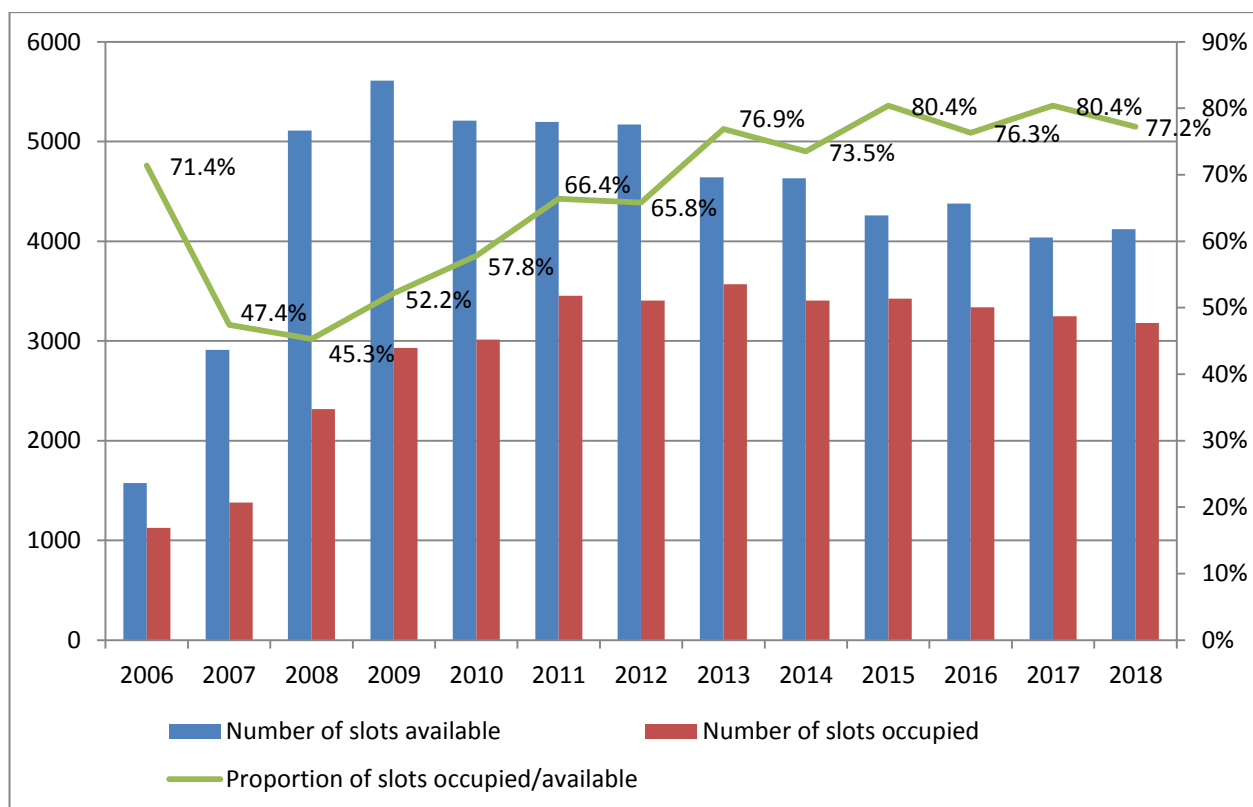
Source: National Focal Point on Drugs and Drug Addictions, 2016 – 2018

**PERSONS SEEKING TREATMENT RELATED TO DRUG USE
REGISTERED IN TREATMENT DEMAND SYSTEM IN BULGARIA
(2000 – 2017)**



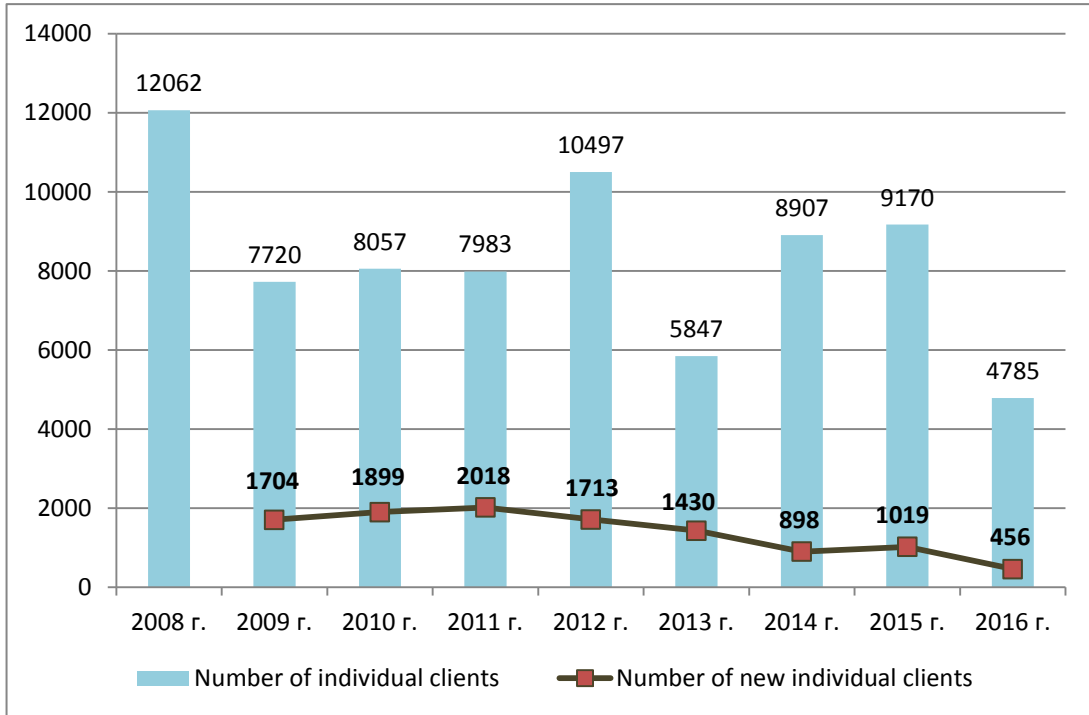
Source: National Focal Point on Drugs and Drug Addictions

**CAPACITY OF OST PROGRAMMES IN BULGARIA
(2006 – 2018)**



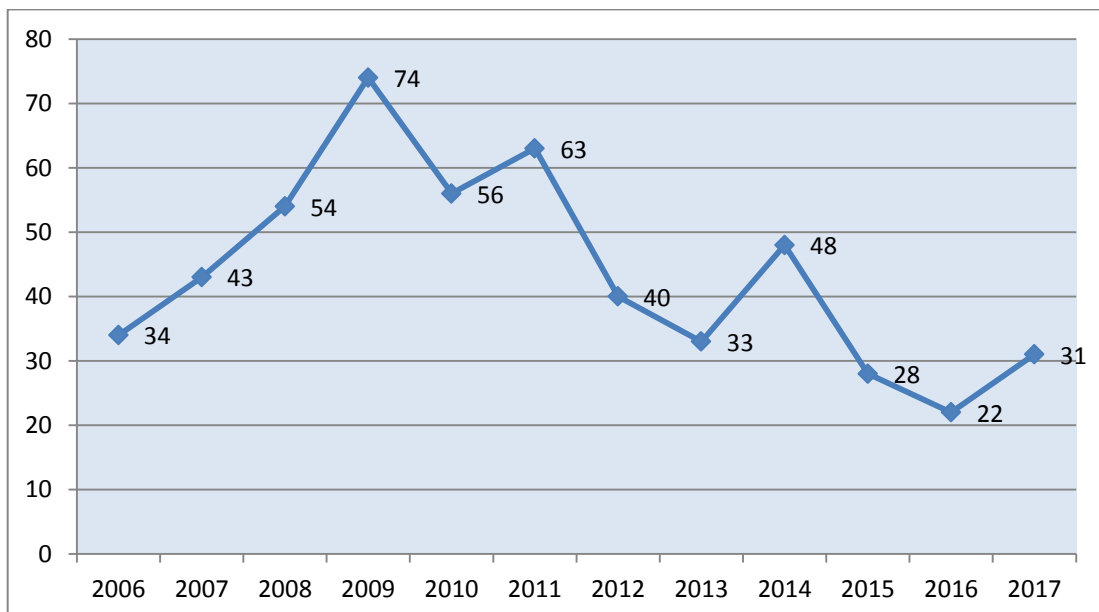
Source: National Focal Point on Drugs and Drug Addictions. NCA

**INDIVIDUAL CLIENTS REACHED BY THE HARM REDUCTION PROGRAMMES
(2008 – 2017)**



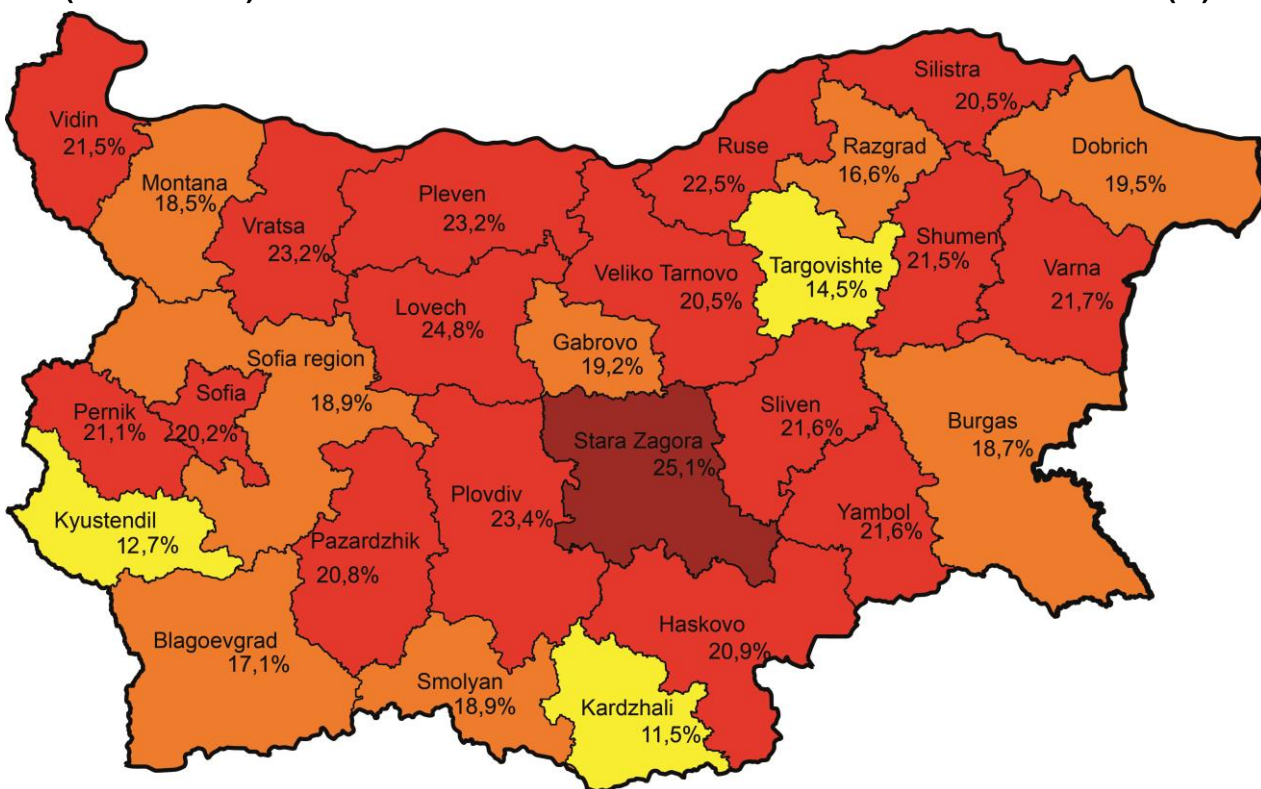
Source: National Centre for Addictions and partners

**NEWLY DIAGNOSED HIV CASES ATTRIBUTTED TO INJECTING DRUG USE
(2006 – 2017)**

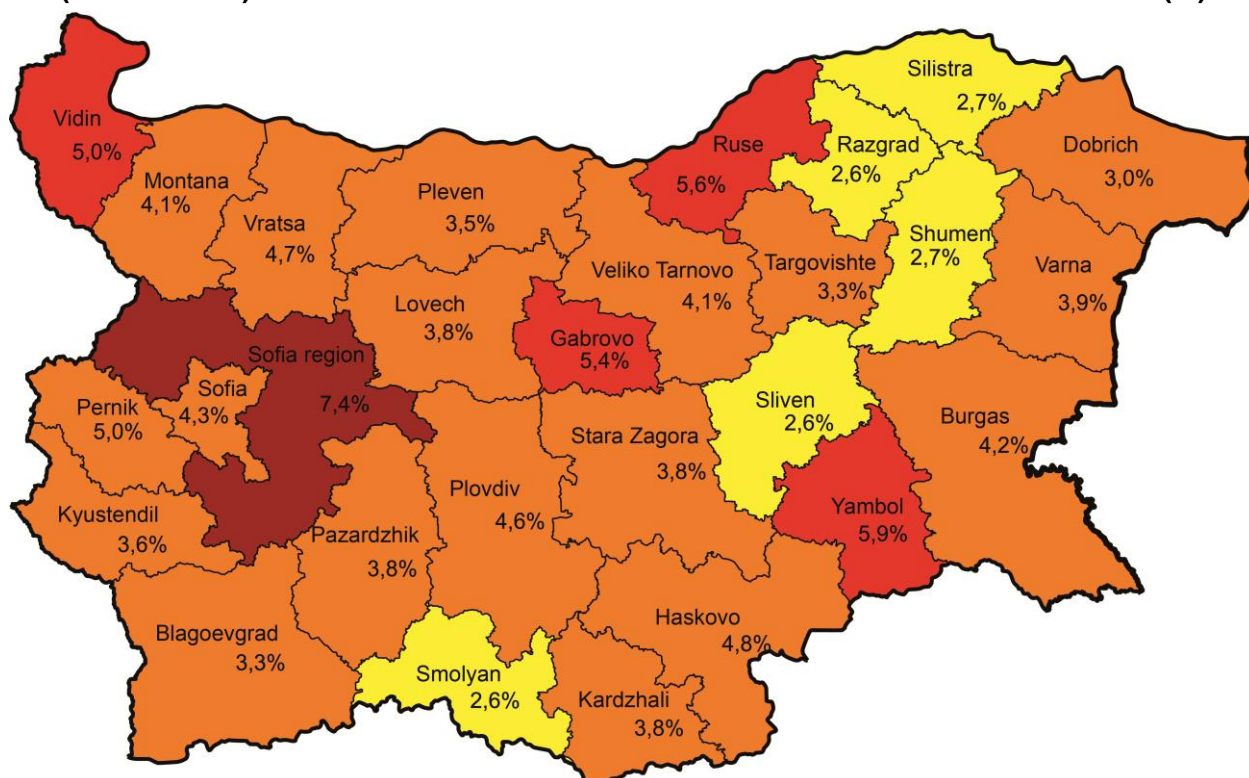


Source: European Centre for Disease Prevention and Control (ECDC)

20 AND MORE DAYS PREVALENCE OF TOBACCO USE AMONG THE SCHOOL STUDENTS (9-12 GRADE) IN THE LAST 30 DAYS IN THE REGIONAL CITIES OF BULGARIA (%)



20 AND MORE DAYS PREVALENCE OF ALCOHOL USE AMONG THE SCHOOL STUDENTS (9-12 GRADE) IN THE LAST 30 DAYS IN THE REGIONAL CITIES OF BULGARIA (%)



Source: National Focal Point on Drugs and Drug Addictions, 2016 – 2018